

30123

DC 30 PG. 20 TRK 32

SUGAR POND MANOR OF WELLINGTON

23

IN PART OF SECTIONS 4, 5, 8, 9, 16 & 17, TWP. 44 S., RGE. 41 E.

PALM BEACH COUNTY, FLORIDA
IN 13 SHEETS SHEET NO. 4

100 80 0 100 200 300 400

SCALE IN FEET
SCALE: 1" = 100'
GEE & JENSON
CONSULTING ENGINEERS, INC.
WEST PALM BEACH, FLORIDA
SEPTEMBER 1972

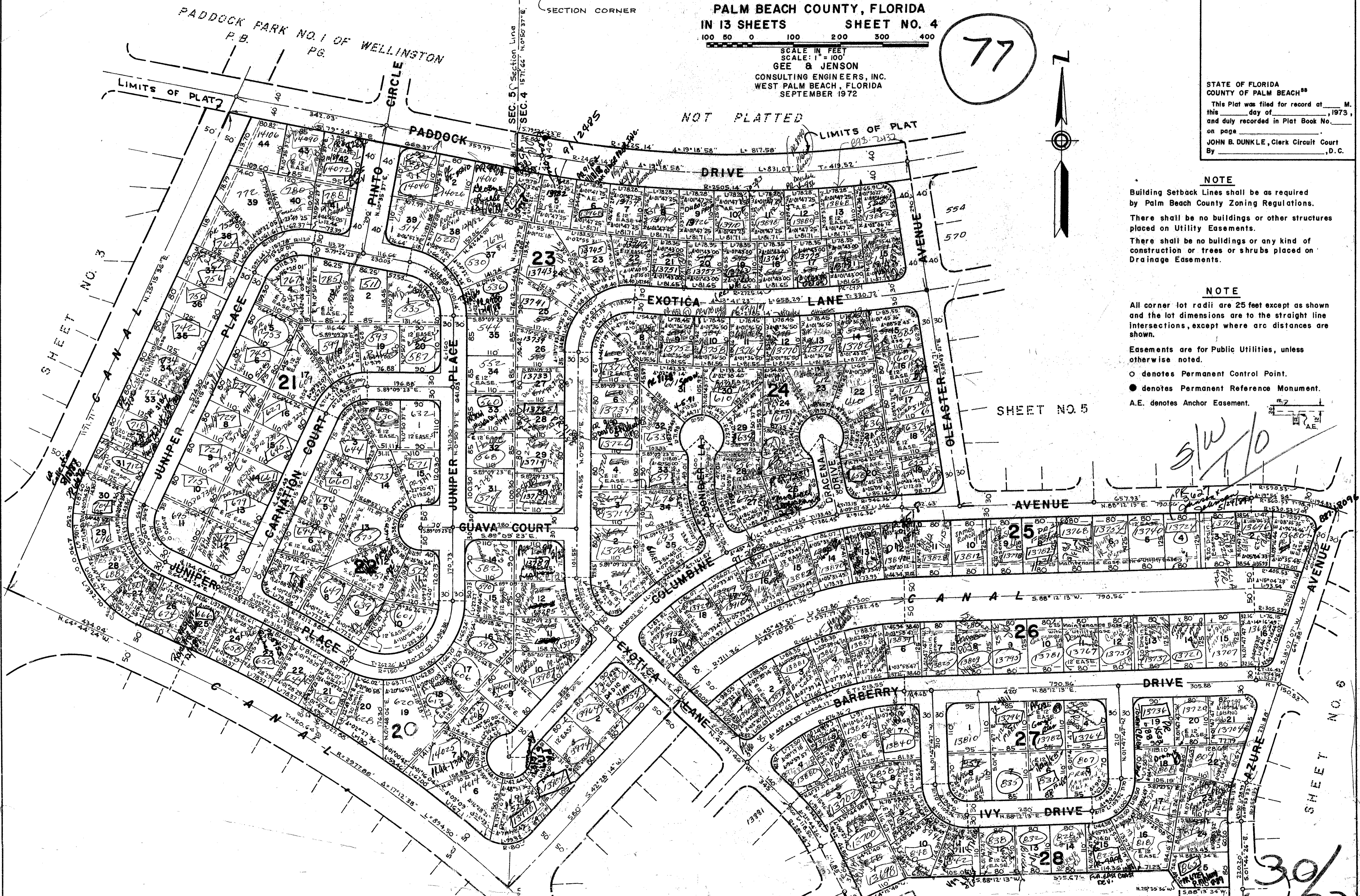
77



STATE OF FLORIDA
COUNTY OF PALM BEACH
This Plat was filed for record at _____ M.
this _____ day of _____, 1973,
and duly recorded in Plat Book No. _____
on page _____
JOHN B. DUNKLE, Clerk Circuit Court
By _____, D.C.

NOTE
Building Setback Lines shall be as required
by Palm Beach County Zoning Regulations.
There shall be no buildings or other structures
placed on Utility Easements.
There shall be no buildings or any kind of
construction or trees or shrubs placed on
Drainage Easements.

NOTE
All corner lot radii are 25 feet except as shown
and the lot dimensions are to the straight line
intersections, except where arc distances are
shown.
Easements are for Public Utilities, unless
otherwise noted.
○ denotes Permanent Control Point.
● denotes Permanent Reference Monument.
A.E. denotes Anchor Easement.



SHEET

NO. 8

SUGAR POND MANOR OF WELLINGTON

SHEET

NO. 7

0332-332

30/123